

Peterborough Children's Services

"Helping children and young people to be their best"

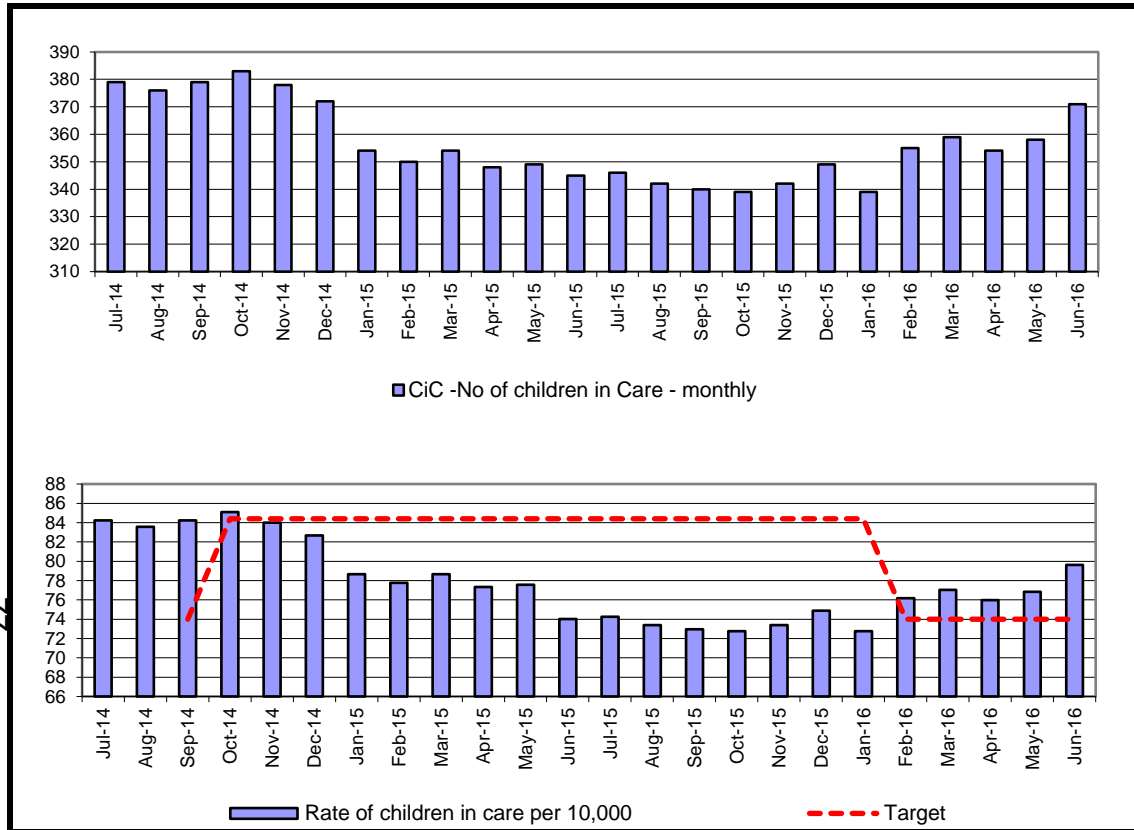


75

FINAL



Contents		Latest Published	SN Avg	ENG Avg	Target	Latest Data		Dir. of travel	Polarity	Page Number
						Actual	RAG			
Children in Care	Number of Children in Care per 10,000	74.0	79.4	60.0	74.0	79.6	A	↓	Smaller is better	24
	Admissions of Children in Care per 10,000	36.2	29.7	26.5	38.0	46.6	0	↑	-	25
	Number of Children who have ceased to be Children in Care per 10,000	32.9	30.1	26.5	38.0	39.1	0	↓	-	26
	Number of Children in Care				345	354	G	↑	Proximity to target	27
	Placement Stability: 3 or more placements during previous 12 months for CiC	8.5%	11.3%	11.0%	9.5%	7.8%	G	↑	Smaller is better	28
	Placement Stability: Length of Placement for Children in Care	73.0%	69.1%	67.0%	71.0%	67.9%	A	↑	Bigger is better	29
	Children in Care Reviews held within timescales	98.7%			100.0%	99.7%	A	↑	Bigger is better	30
	Children in care statutory visits in time				95.0%	97.0%	G	↑	Bigger is better	31
	Percentage of children adopted	19.0%	24.0%	17.0%	20.0%	15.4%	A	↓	Bigger is better	32
	Average days between child entering care and moving in with a adoptive family	593	616	628	487	381	G	=	Smaller is better	33
	Average days between court agreeing adoption and LA approving a match	242	211	217	120	185	R	=	Smaller is better	34
	Children in care - Missing from care					28		↑	-	35
	Initial health assessments completed within 20 working days of child entering care				95.0%	47.5%	R	↑	Bigger is better	36
	Health of Children in Care - Annual Health Assessments	93.9%	89.1%	88.4%	95.0%	92.7%	A	↑	Bigger is better	37
	Children in care (aged 3-17 years) with dental checks held within previous 12 months				95.0%	72.8%	R	↑	Bigger is better	38
	Personal Education Plans (PEPs)				95.0%	91.3%	A	↑	Bigger is better	39
	Leaving care cases with a pathway plan that has been updated within the last 6 months					87.2%			Bigger is better	40
	Care leavers (+19 years) - Not in Education, Employment and Training					39.9%			Smaller is better	41
Care leavers (+19 Years) - Not in Suitable Accommodation					9.2%			Smaller is better	42	
Profiles	Children in care; child protection; children in need; leaving care; referrals starting in month									43 - 47



Month	CiC -	Pop.	Rate of
Jul-14	379	45000	84.2
Aug-14	376	45000	83.6
Sep-14	379	45000	84.2
Oct-14	383	45000	85.1
Nov-14	378	45000	84.0
Dec-14	372	45000	82.7
Jan-15	354	45000	78.7
Feb-15	350	45000	77.8
Mar-15	354	45000	78.7
Apr-15	348	45000	77.3
May-15	349	45000	77.6
Jun-15	345	46600	74.0
Jul-15	346	46600	74.2
Aug-15	342	46600	73.4
Sep-15	340	46600	73.0
Oct-15	339	46600	72.7
Nov-15	342	46600	73.4
Dec-15	349	46600	74.9
Jan-16	339	46600	72.7
Feb-16	355	46600	76.2
Mar-16	359	46600	77.0
Apr-16	354	46600	76.0
May-16	358	46600	76.8
Jun-16	371	46600	79.6

Target	Variance	RAG
74.0	13.8%	R
74.0	12.9%	R
74.0	13.8%	R
84.4	0.8%	G
84.4	-0.5%	G
84.4	-2.1%	G
84.4	-6.8%	G
84.4	-7.8%	G
84.4	-6.8%	G
84.4	-8.4%	G
84.4	-8.1%	G
84.4	-12.3%	A
84.4	-12.0%	A
84.4	-13.0%	G
84.4	-13.6%	A
84.4	-13.8%	G
84.4	-13.0%	G
84.4	-11.3%	G
84.4	-13.8%	G
74.0	2.9%	A
74.0	4.1%	G
74.0	2.7%	A
74.0	3.8%	A
74.0	7.6%	A

CSC Commentary

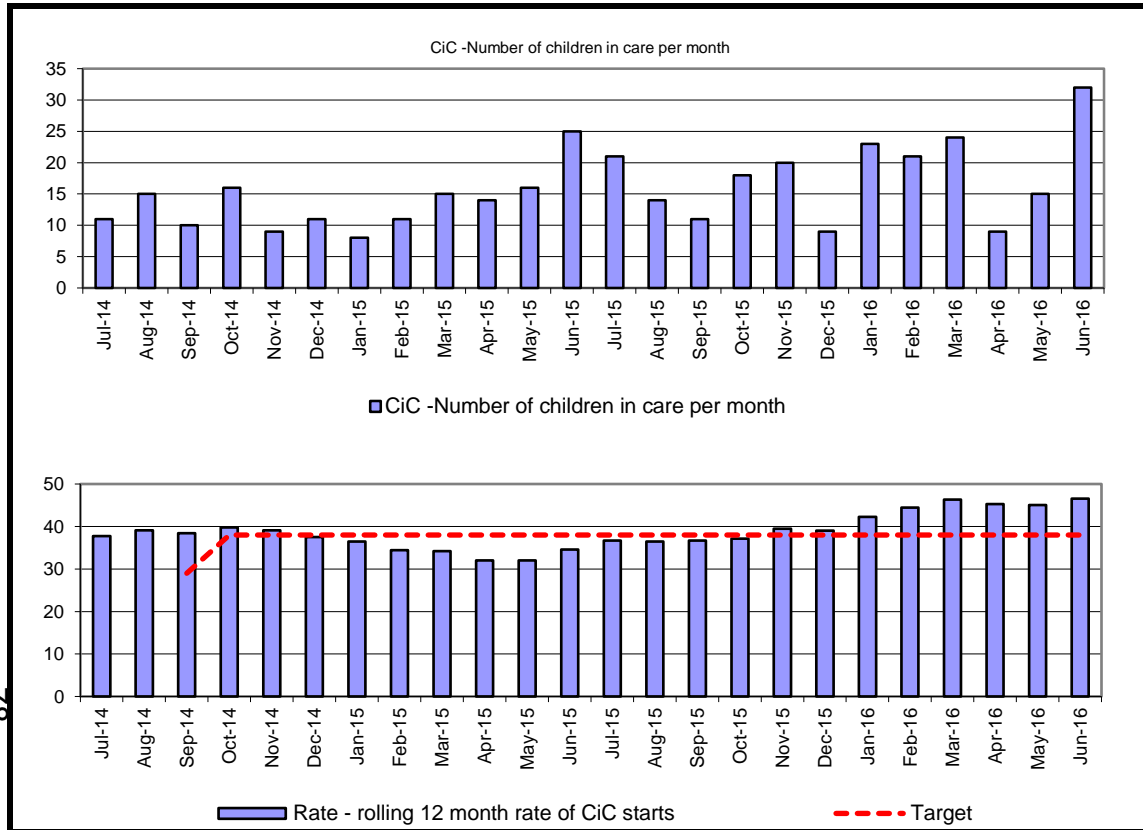
The number of CiC at the end of June 2016 has increased to 371 which is an increase of 13 children since the end of May, which continues the overall trend of an increasing CiC population in the city. This is above the target rate but remains in the amber RAG rating. The biggest increase has been in the 5-9 years age band indicating that younger children are the most vulnerable.

Definition

Number of children in care divided by the population of 0-17 year olds in Peterborough multiplied by 10,000
 The number of children in care is taken as a snapshot count at the end of each month
 Population for denominator: 46600

G = 74.0	A > 74.0	R > 79.4
-----------------	--------------------	--------------------

Year	PCC Result	SN Result	ENG Result
2012-13	78.0	78.0	60.0
2013-14	80.0	77.2	60.0
2014-15	74.0	79.4	60.0



Month	CiC -	12 Mths	Rate
Jul-14	11	161	37.8
Aug-14	15	176	39.1
Sep-14	10	173	38.4
Oct-14	16	179	39.8
Nov-14	9	176	39.1
Dec-14	11	169	37.6
Jan-15	8	164	36.4
Feb-15	11	155	34.4
Mar-15	15	154	34.2
Apr-15	14	120	32.0
May-15	16	136	32.0
Jun-15	25	161	34.5
Jul-15	21	171	36.7
Aug-15	14	170	36.5
Sep-15	11	171	36.7
Oct-15	18	173	37.1
Nov-15	20	184	39.5
Dec-15	9	182	39.1
Jan-16	23	197	42.3
Feb-16	21	207	44.4
Mar-16	24	216	46.4
Apr-16	9	211	45.3
May-16	15	210	45.1
Jun-16	32	217	46.6

Month	Target	Variance	RAG
Jul-14	29.0	30.3%	
Aug-14	29.0	34.9%	
Sep-14	29.0	32.6%	
Oct-14	38.0	4.7%	
Nov-14	38.0	2.9%	
Dec-14	38.0	-1.2%	
Jan-15	38.0	-4.1%	
Feb-15	38.0	-9.4%	
Mar-15	38.0	-9.9%	
Apr-15	38.0	-15.8%	
May-15	38.0	-15.8%	
Jun-15	38.0	-9.1%	
Jul-15	38.0	-3.4%	
Aug-15	38.0	-4.0%	
Sep-15	38.0	-3.4%	
Oct-15	38.0	-2.3%	
Nov-15	38.0	3.9%	
Dec-15	38.0	2.8%	
Jan-16	38.0	11.2%	
Feb-16	38.0	16.9%	
Mar-16	38.0	22.0%	
Apr-16	38.0	19.2%	
May-16	38.0	18.6%	
Jun-16	38.0	22.5%	

CSC Commentary

Admissions into care increased again this month and at a larger than previous amount. The rolling 12 month figure is now at 217, which is the highest it has been compared to the current data recorded here. Performance relating to the overall number of children coming into care at 46.6 remains significantly above the target rate of 38. There are 32 children recorded as coming into care this month. Of this number 12 actually came into care in May but were BLA at that point and their LAC status was only confirmed in June. Of the 20 remaining, 8 were UASC. 2 were over 16 and accommodated due to family breakdown and placed at the Foyer. 4 were PPO and 1 EPO as a result of immediate CP concerns. 1 was a relinquished baby and the remaining 4 were also as a result of immediate safeguarding concerns.

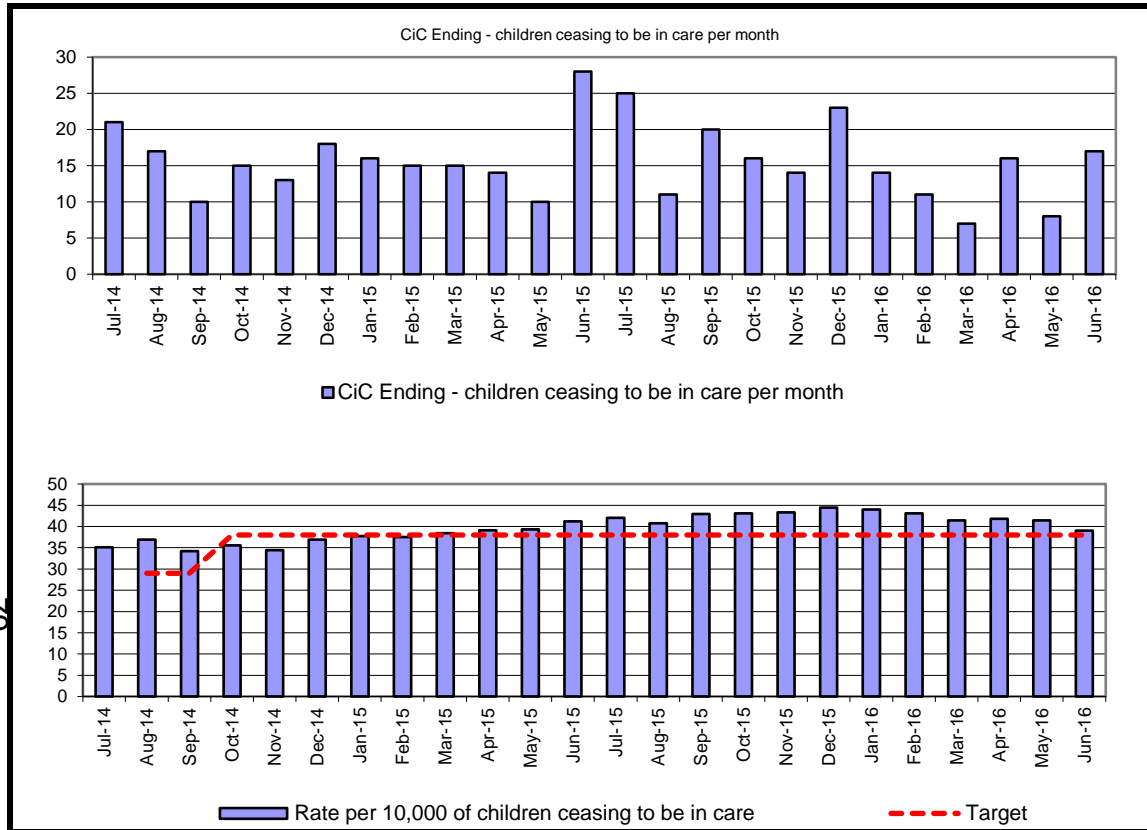
Definition

Children who came into care (rolling 12 months) divided by the population of 0-17 year olds in Peterborough multiplied by 10,000. If a child is admitted to care on more than one occasion then each time is counted in this indicator.

Population for denominator: 46600



Year	PCC Result	SN Result	ENG Result
2012-13	31.8	30.8	25.3
2013-14	36.2	29.7	26.5
2014-15	30.0	34.2	26.8



Month	CiC Ending -	12 Mths	children ce	Target	Variance	RAG
Jul-14	21	158	35.1	29.0	21.1%	
Aug-14	17	166	36.9	29.0	27.2%	
Sep-14	10	154	34.2	29.0	18.0%	
Oct-14	15	160	35.6	38.0	-6.4%	
Nov-14	13	155	34.4	38.0	-9.4%	
Dec-14	18	166	36.9	38.0	-2.9%	
Jan-15	16	170	37.8	38.0	-0.6%	
Feb-15	15	169	37.6	38.0	-1.2%	
Mar-15	15	173	38.4	38.0	1.2%	
Apr-15	14	154	39.1	38.0	2.9%	
May-15	10	164	39.3	38.0	3.5%	
Jun-15	28	192	41.2	38.0	8.4%	
Jul-15	25	196	42.1	38.0	10.7%	
Aug-15	11	190	40.8	38.0	7.3%	
Sep-15	20	200	42.9	38.0	12.9%	
Oct-15	16	201	43.1	38.0	13.5%	
Nov-15	14	202	43.3	38.0	14.1%	
Dec-15	23	207	44.4	38.0	16.9%	
Jan-16	14	205	44.0	38.0	15.8%	
Feb-16	11	201	43.1	38.0	13.5%	
Mar-16	7	193	41.4	38.0	9.0%	
Apr-16	16	195	41.8	38.0	10.1%	
May-16	8	193	41.4	38.0	9.0%	
Jun-16	17	182	39.1	38.0	2.8%	

CSC Commentary

17 children ceased to be looked after this month and this continues the downward trend of children exiting the care system. This is in contrast to the increasing numbers of children entering care, which remains the main reason why the overall CiC population continues to grow.

Definition

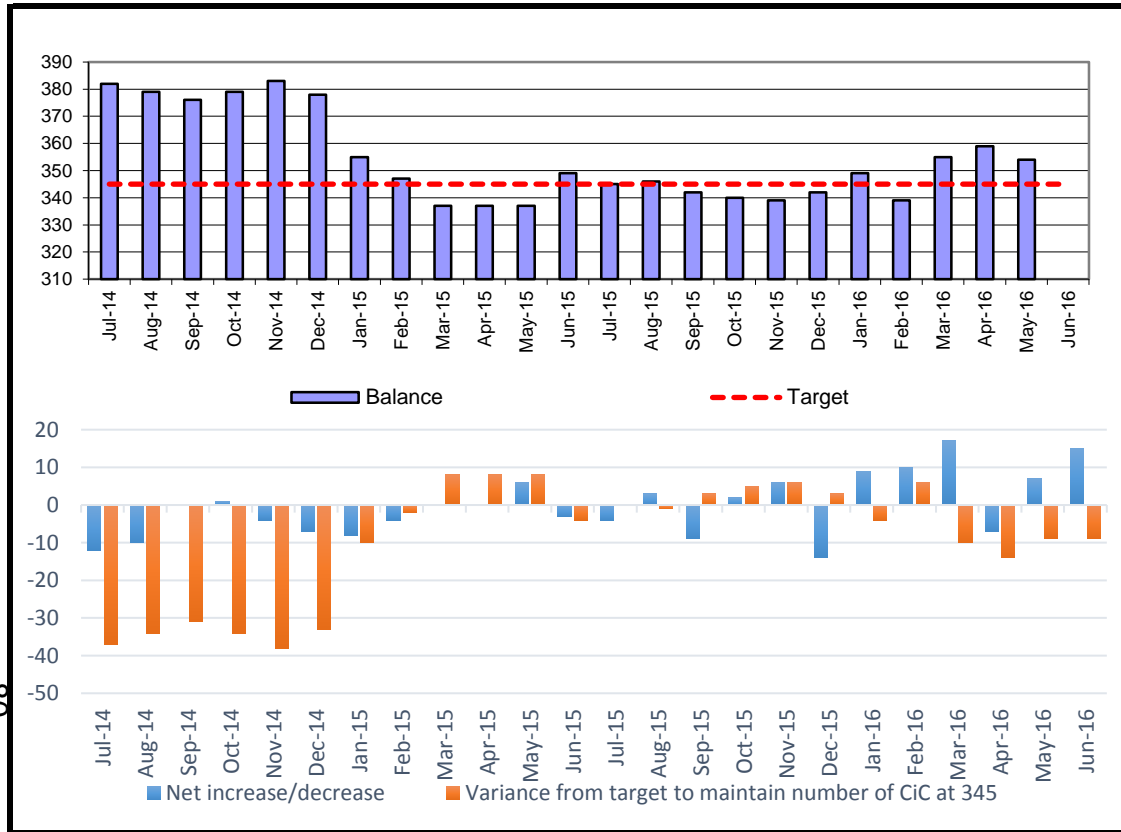
Number of children who ceased to be in care (rolling 12 months) divided by the population of 0-17 year olds in Peterborough multiplied by 10,000. If a child ceased to be in care on more than one occasion then each time is counted in this indicator.

Population for denominator: 46600

G = G = A > R <

Year	PCC Result	SN Result	ENG Result
2012-13	30.7	28.7	25.0
2013-14	32.9	30.1	26.5
2014-15	35.4	32.3	26.8

08



Month	CiC Start	CiC End	Net i	Balance
Jul-14	9	21	-12	382
Aug-14	11	21	-10	379
Sep-14	10	10	0	376
Oct-14	16	15	1	379
Nov-14	9	13	-4	383
Dec-14	11	18	-7	378
Jan-15	8	16	-8	355
Feb-15	11	15	-4	347
Mar-15	15	15	0	337
Apr-15	14	14	0	337
May-15	16	10	6	337
Jun-15	25	28	-3	349
Jul-15	21	25	-4	345
Aug-15	14	11	3	346
Sep-15	11	20	-9	342
Oct-15	18	16	2	340
Nov-15	20	14	6	339
Dec-15	9	23	-14	342
Jan-16	23	14	9	349
Feb-16	21	11	10	339
Mar-16	24	7	17	355
Apr-16	9	16	-7	359
May-16	15	8	7	354
Jun-16	32	17	15	354

Month	Target	Variance	RAG
Jul-14	345.0	-37	G
Aug-14	345.0	-34	G
Sep-14	345.0	-31	R
Oct-14	345.0	-34	R
Nov-14	345.0	-38	R
Dec-14	345.0	-33	R
Jan-15	345.0	-10	R
Feb-15	345.0	-2	R
Mar-15	345.0	8	R
Apr-15	345.0	8	R
May-15	345.0	8	A
Jun-15	345.0	-4	G
Jul-15	345.0	0	G
Aug-15	345.0	-1	G
Sep-15	345.0	3	G
Oct-15	345.0	5	G
Nov-15	345.0	6	G
Dec-15	345.0	3	G
Jan-16	345.0	-4	G
Feb-16	345.0	6	G
Mar-16	345.0	-10	G
Apr-16	345.0	-14	G
May-16	345.0	-9	G
Jun-16	345.0	-9	G

CSC Commentary

The number of children who started to be looked after this month is 32 with 17 children ceasing to be in care. Although this is a significant increase from previous months, the variance from our target is -9 and this remains within the green RAG rating for our performance.

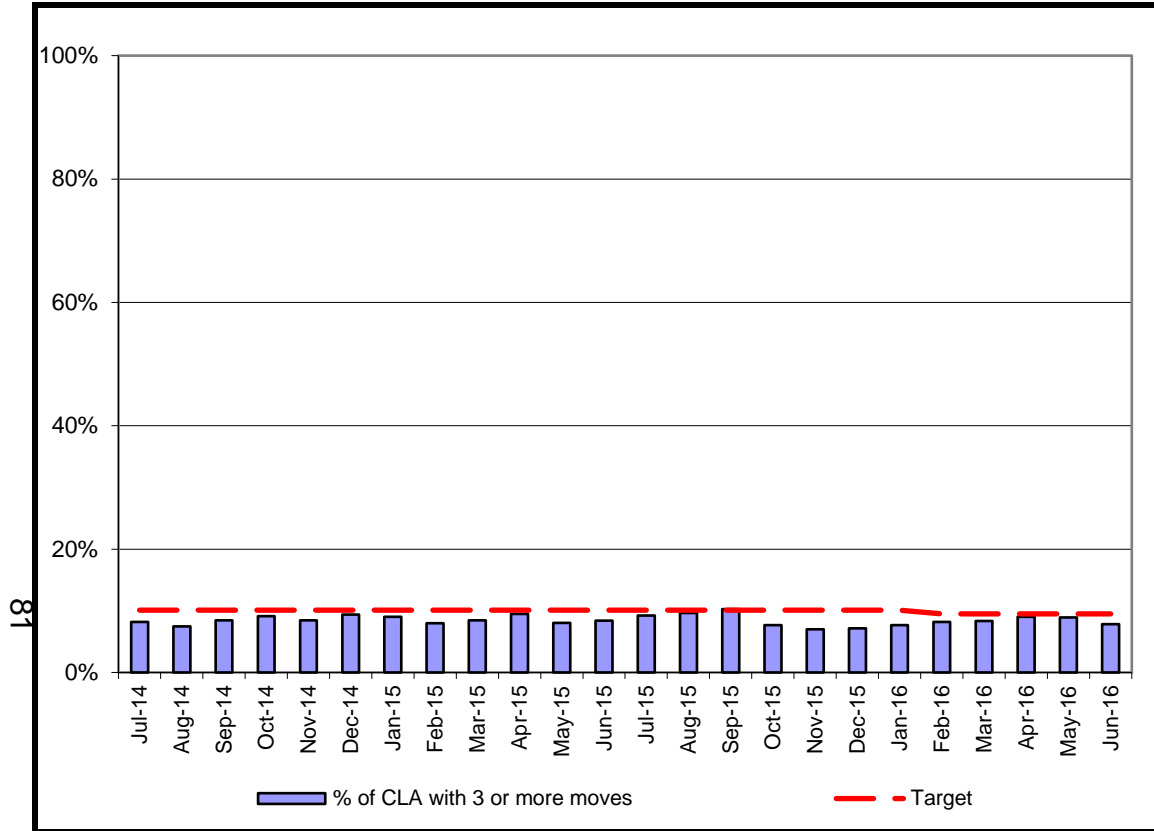
Definition

Net change in the number of children in care

Population for denominator: 46600

G = 345 **A = +/-20** **R = +/-30**

Year	PCC Result	SN Result	ENG Result
2012-13	71.5	54.3	46.2
2013-14	55.7	64.7	52.1
2014-15			



Month	Num.	Denom.	% of CLA with	Target	Variance	RAG
Jul-14	31	379	8.2%	10.1%	-1.9	G
Aug-14	28	376	7.4%	10.1%	-2.7	G
Sep-14	32	379	8.4%	10.1%	-1.7	G
Oct-14	35	383	9.1%	10.1%	-1.0	G
Nov-14	32	378	8.5%	10.1%	-1.6	G
Dec-14	35	372	9.4%	10.1%	-0.7	G
Jan-15	32	354	9.0%	10.1%	-1.1	G
Feb-15	28	350	8.0%	10.1%	-2.1	G
Mar-15	30	354	8.5%	10.1%	-1.6	G
Apr-15	33	348	9.5%	10.1%	-0.6	G
May-15	28	349	8.0%	10.1%	-2.1	G
Jun-15	29	345	8.4%	10.1%	-1.7	G
Jul-15	32	346	9.2%	10.1%	-0.9	G
Aug-15	33	342	9.6%	10.1%	-0.5	G
Sep-15	35	340	10.3%	10.1%	0.2	G
Oct-15	26	339	7.7%	10.1%	-2.4	A
Nov-15	24	342	7.0%	10.1%	-3.1	A
Dec-15	25	349	7.2%	10.1%	-2.9	G
Jan-16	26	339	7.7%	10.1%	-2.4	G
Feb-16	29	355	8.2%	9.5%	-1.3	G
Mar-16	30	359	8.4%	9.5%	-1.1	G
Apr-16	32	354	9.0%	9.5%	-0.5	G
May-16	32	358	8.9%	9.5%	-0.6	G
Jun-16	29	371	7.8%	9.5%	-1.7	G

CSC Commentary

The downward trend in this indicator over the last few months has been maintained, demonstrating continued good performance. The percentage of children with 3 or more moves is now at 7.8%, which is a variance of 1.7 below our target and keeps this in the green RAG rating band.

Definition

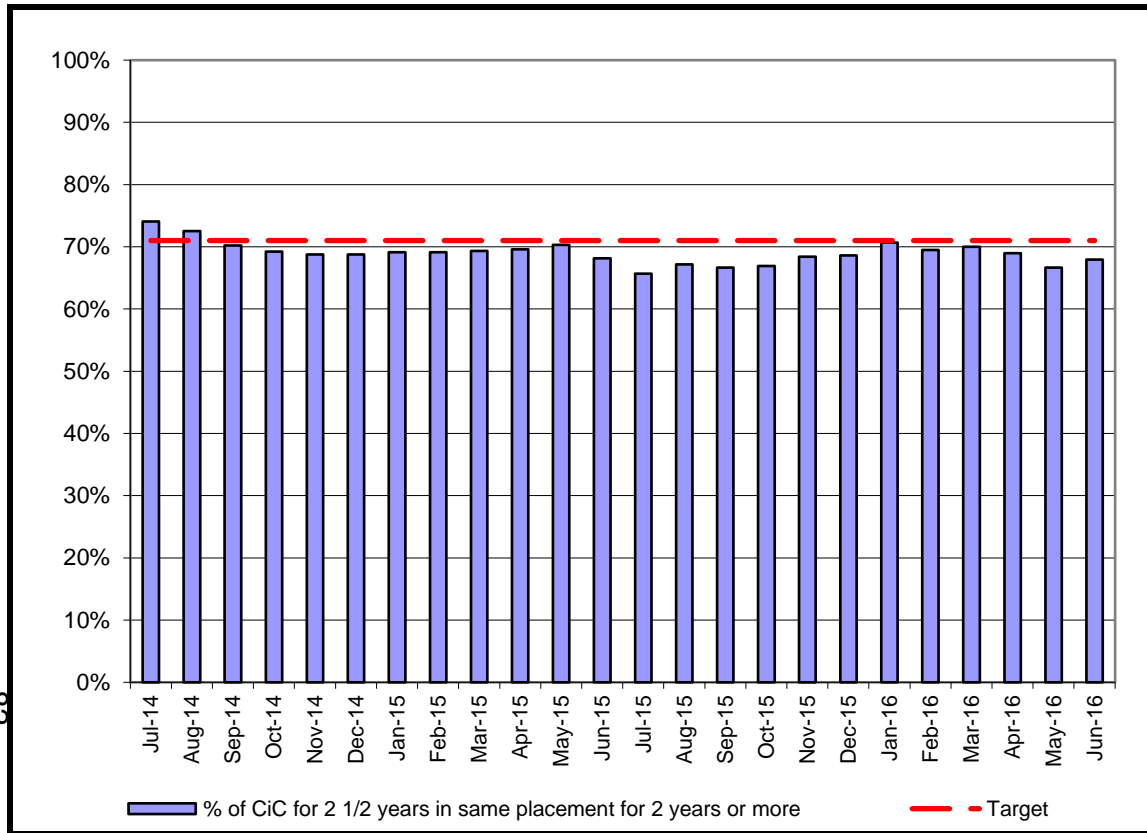
The percentage of children in care at any given time with three or more placements during the last 12 months.

Population for denominator: 46600

G = 9.5% **A > 9.5-11.3%** **R > 11.3**

Year	PCC Result	SN Result	ENG Result
2012-13	11.1%	10.3%	11.1%
2013-14	9.0%	11.3%	11.0%
2014-15	8.5%		

82



Month	Num.	Denom.	% of CiC	Target	Variance	RAG
Jul-14	97	131	74.0%	71.0%	3.0	G
Aug-14	95	131	72.5%	71.0%	1.5	G
Sep-14	92	131	70.2%	71.0%	-0.8	G
Oct-14	90	130	69.2%	71.0%	-1.8	G
Nov-14	88	128	68.8%	71.0%	-2.3	G
Dec-14	88	128	68.8%	71.0%	-2.3	G
Jan-15	85	123	69.1%	71.0%	-1.9	G
Feb-15	94	136	69.1%	71.0%	-1.9	G
Mar-15	95	137	69.3%	71.0%	-1.7	A
Apr-15	96	138	69.6%	71.0%	-1.4	A
May-15	97	138	70.3%	71.0%	-0.7	A
Jun-15	92	135	68.1%	71.0%	-2.9	A
Jul-15	88	134	65.7%	71.0%	-5.3	A
Aug-15	90	134	67.2%	71.0%	-3.8	R
Sep-15	90	135	66.7%	71.0%	-4.3	R
Oct-15	93	139	66.9%	71.0%	-4.1	R
Nov-15	93	136	68.4%	71.0%	-2.6	R
Dec-15	94	137	68.6%	71.0%	-2.4	R
Jan-16	94	133	70.7%	71.0%	-0.3	R
Feb-16	91	131	69.5%	71.0%	-1.5	R
Mar-16	91	130	70.0%	71.0%	-1.0	A
Apr-16	89	129	69.0%	71.0%	-2.0	A
May-16	86	129	66.7%	71.0%	-4.3	A
Jun-16	89	131	67.9%	71.0%	-3.1	A

CSC Commentary

Although this figure is still below our target, performance has improved slightly from last month. Workers have been reminded about the processes to implement for maintaining fragile placements and this seems to have had some empirical impact. Managers will ensure this remains an area of focus in team meetings in order to continue the upward trend.

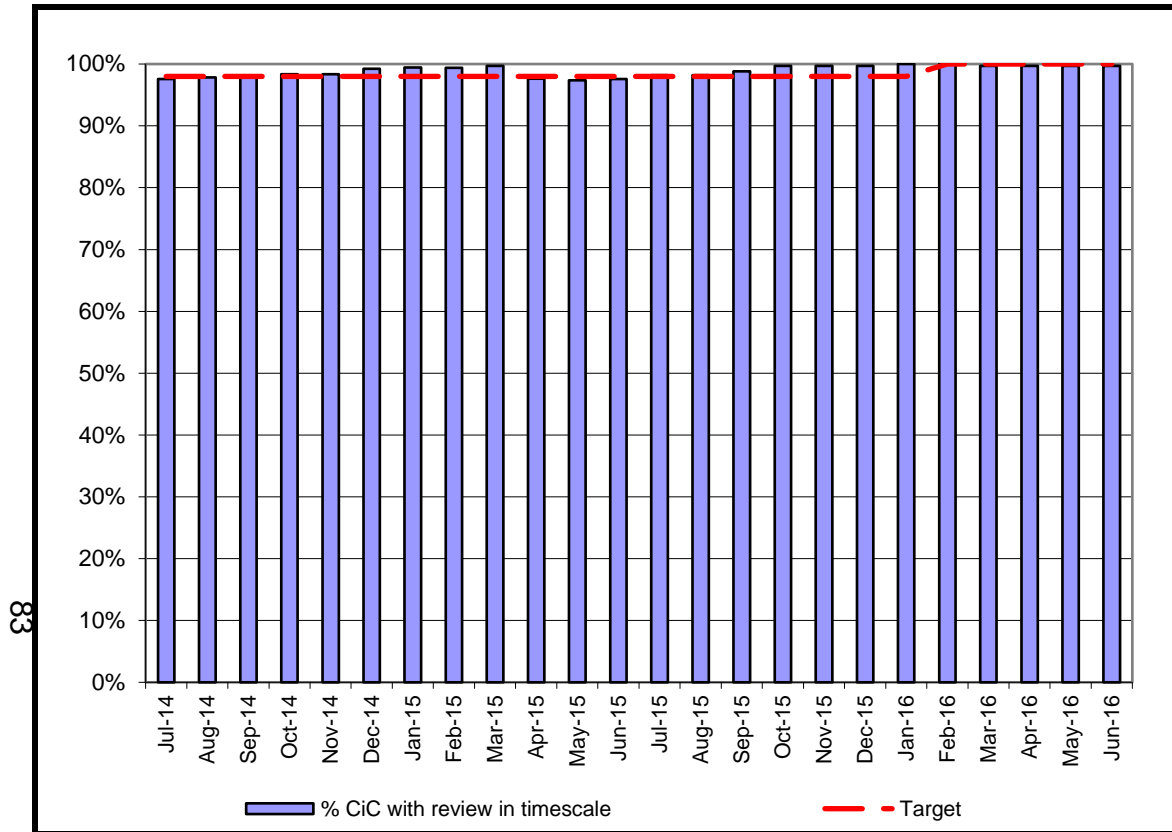
Definition

The percentage of children in care aged under 16 who had been in care continuously for at least 2.5 years who were living in the same placement for at least 2 years, or are placed for adoption and their adoptive placement together with their previous placement together last for at least 2 years.

Population for denominator: 46600

G = 71%	A >69%-71%	R > 69%
---------	------------	---------

Year	PCC Result	SN Result	ENG Result
2012-13	66.7%	69.4%	67.3%
2013-14	73.0%	69.1%	67.0%
2014-15			



Month	Num.	Denom.	% CiC
Jul-14	360	369	97.6%
Aug-14	360	368	97.8%
Sep-14	364	371	98.1%
Oct-14	360	366	98.4%
Nov-14	363	369	98.4%
Dec-14	386	389	99.2%
Jan-15	345	347	99.4%
Feb-15	337	339	99.4%
Mar-15	342	343	99.7%
Apr-15	330	338	97.6%
May-15	330	339	97.3%
Jun-15	322	330	97.6%
Jul-15	326	332	98.2%
Aug-15	331	337	98.2%
Sep-15	330	334	98.8%
Oct-15	326	327	99.7%
Nov-15	335	336	99.7%
Dec-15	344	345	99.7%
Jan-16	329	329	100.0%
Feb-16	333	333	100.0%
Mar-16	344	345	99.7%
Apr-16	347	348	99.7%
May-16	350	351	99.7%
Jun-16	347	348	99.7%

Target	Variance	RAG
98.0%	-0.4	G
98.0%	-0.2	G
98.0%	0.1	A
98.0%	0.4	G
98.0%	0.4	A
98.0%	1.2	A
98.0%	1.4	A
98.0%	1.4	A
98.0%	1.7	G
98.0%	-0.4	G
98.0%	-0.7	G
98.0%	-0.4	R
98.0%	0.2	R
98.0%	0.2	R
98.0%	0.8	A
98.0%	1.7	A
98.0%	1.7	A
98.0%	1.7	A
98.0%	2.0	A
100.0%	0.0	A
100.0%	-0.3	G
100.0%	-0.3	G
100.0%	-0.3	A
100.0%	-0.3	A

CSC Commentary

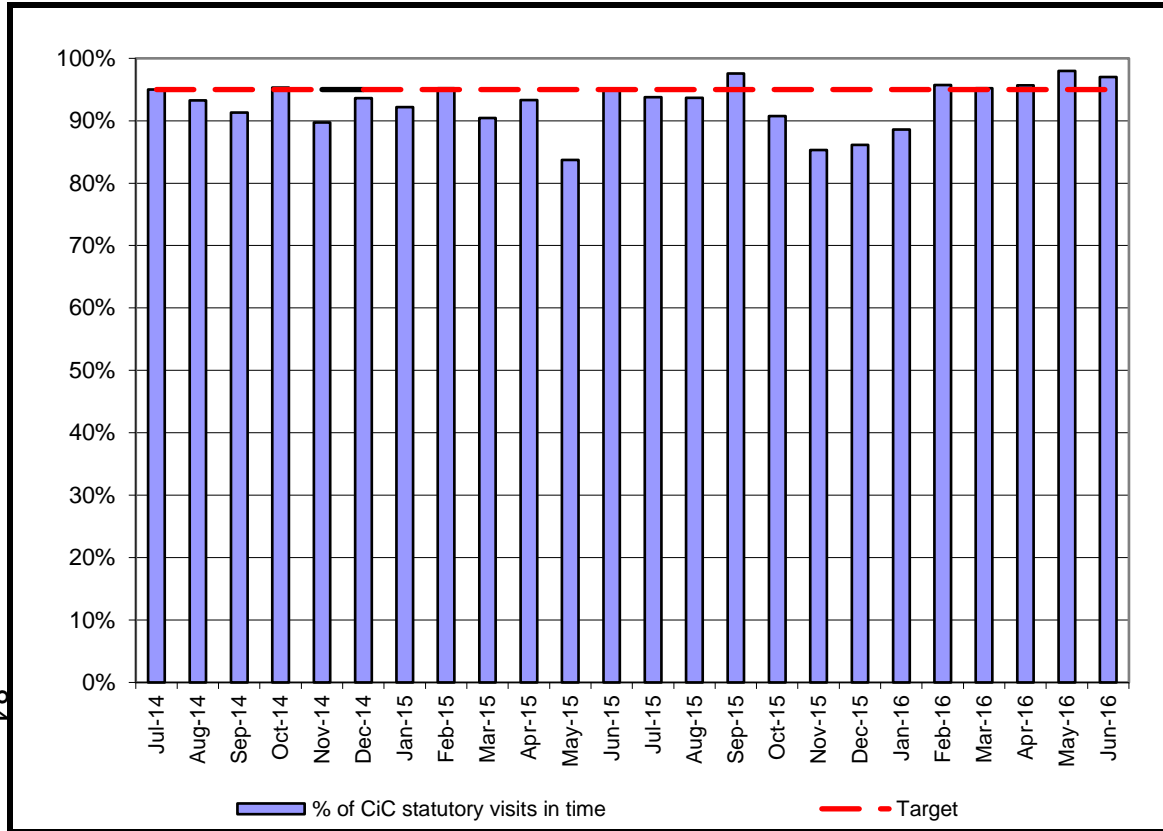
This indicator is measured on a rolling 12 month basis and following a small dip in performance in March, this will continue to be 0.3% below the 100% target. However, performance has remained steady, evidencing that statutory reviews remain an area of priority.

Definition

The percentage of Looked after children for at least one month, whose case was reviewed within the required timescales.
 The denominator is children who are LAC for at least one month at the end of the reporting month. The numerator is the number of children who have not had a review in the last 12 months recorded as outside of timescale.

G = 100% **A > 98%** **R < 98%**

84



Month	Num.	Denom.	% of
Jul-14	341	359	95.0%
Aug-14	333	357	93.3%
Sep-14	325	356	91.3%
Oct-14	346	363	95.3%
Nov-14	323	360	89.7%
Dec-14	337	360	93.6%
Jan-15	319	346	92.2%
Feb-15	317	333	95.2%
Mar-15	302	334	90.4%
Apr-15	307	329	93.3%
May-15	278	332	83.7%
Jun-15	308	324	95.1%
Jul-15	300	320	93.8%
Aug-15	311	332	93.7%
Sep-15	320	328	97.6%
Oct-15	295	325	90.8%
Nov-15	285	334	85.3%
Dec-15	286	332	86.1%
Jan-16	287	324	88.6%
Feb-16	313	327	95.7%
Mar-16	318	334	95.2%
Apr-16	333	348	95.7%
May-16	339	346	98.0%
Jun-16	327	337	97.0%

Target	Variance	RAG
95.0%	0.0	A
95.0%	-1.7	G
95.0%	-3.7	G
95.0%	0.3	A
95.0%	-5.3	A
95.0%	-1.4	A
95.0%	-2.8	G
95.0%	0.2	A
95.0%	-4.6	A
95.0%	-1.7	G
95.0%	-11.3	G
95.0%	0.1	A
95.0%	-1.3	R
95.0%	-1.3	G
95.0%	2.6	A
95.0%	-4.2	A
95.0%	-9.7	G
95.0%	-8.9	A
95.0%	-6.4	R
95.0%	0.7	R
95.0%	0.2	R
95.0%	0.7	G
95.0%	3.0	G
95.0%	2.0	G

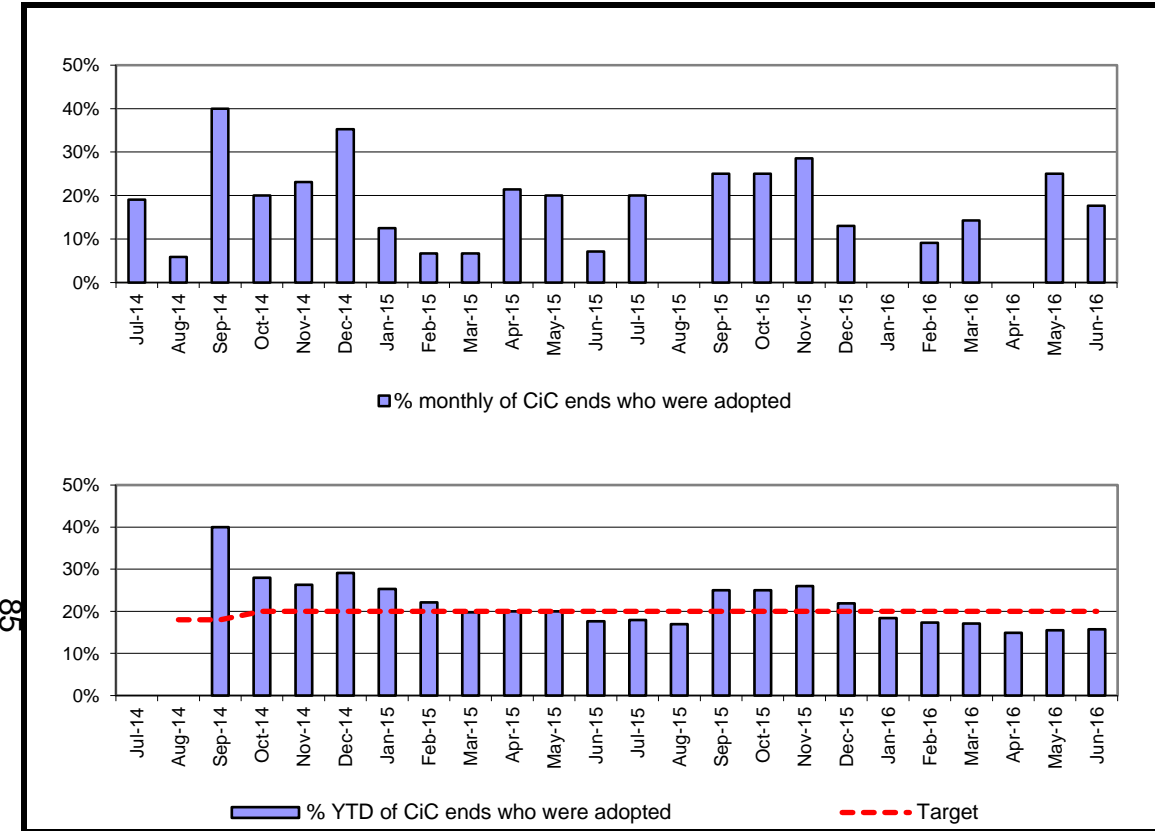
CSC Commentary

Statutory visits within timescale have taken a small decrease in performance this month, which is in part due to worker absence and some older teenagers not co-operating with visiting requirements. However, managers continue to remind workers of the expectations on ensuring full compliance with visits and to ensure that they are planned in advance of the actual date to allow for rearrangements to be made within the minimum time period allowed.

Definition

Of all Children in Care that have been looked after for more than 6 weeks, the number and percentage of visits that were completed within the 6 week deadline (or within three months for those Children in Care that have been looked after for more than 12 months and whose placement is deemed to be permanent). This is snapshot data taken at the month end.

G = 95% **A > 90%** **R < 90%**



Month	Adop.	CiC Ends	% monthly	% YTD	Target	Var	RAG
Jul-14	4	21	19.0%	0.0%	18.0%	-18.0	G
Aug-14	1	17	5.9%	0.0%	18.0%	-18.0	A
Sep-14	4	10	40.0%	40.0%	18.0%	22.0	G
Oct-14	3	15	20.0%	28.0%	20.0%	8.0	G
Nov-14	3	13	23.1%	26.3%	20.0%	6.3	G
Dec-14	6	17	35.3%	29.1%	20.0%	9.1	A
Jan-15	2	16	12.5%	25.4%	20.0%	5.4	A
Feb-15	1	15	6.7%	22.1%	20.0%	2.1	A
Mar-15	1	15	6.7%	19.8%	20.0%	-0.2	A
Apr-15	3	14	21.4%	20.0%	20.0%	0.0	A
May-15	2	10	20.0%	20.0%	20.0%	0.0	A
Jun-15	2	28	7.1%	17.6%	20.0%	-2.4	A
Jul-15	5	25	20.0%	18.0%	20.0%	-2.0	A
Aug-15	0	11	0.0%	16.9%	20.0%	-3.1	A
Sep-15	5	20	25.0%	25.0%	20.0%	5.0	G
Oct-15	4	16	25.0%	25.0%	20.0%	5.0	A
Nov-15	4	14	28.6%	26.0%	20.0%	6.0	A
Dec-15	3	23	13.0%	21.9%	20.0%	1.9	A
Jan-16	0	14	0.0%	18.4%	20.0%	-1.6	A
Feb-16	1	11	9.1%	17.3%	20.0%	-2.7	A
Mar-16	1	7	14.3%	17.1%	20.0%	-2.9	A
Apr-16	0	16	0.0%	14.9%	20.0%	-5.1	A
May-16	2	8	25.0%	15.5%	20.0%	-4.5	A
Jun-16	3	17	17.6%	15.8%	20.0%	-4.2	A
YTD:	28	182	--	15.4%	20.0%	-4.6	A

CSC Commentary

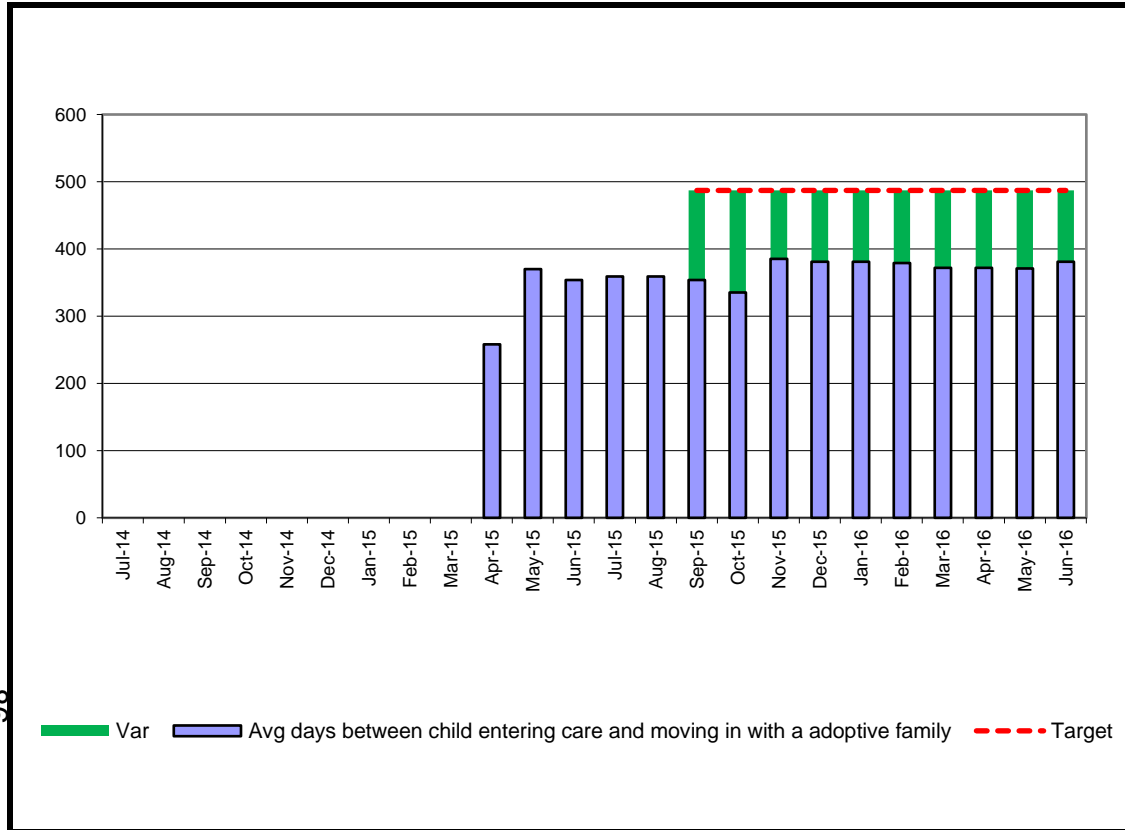
The percentage of children who ceased to be in care as a result of an adoption order is within 1% of the performance last year. This demonstrates good performance in the context of a decreasing trend of adoption orders nationally. Given the national context of a growth in SGOs and a decline in adoption orders the RAG rating will need adjusting for this indicator.

Definition
The number of children adopted as a percentage of the number of children who ceased to be in care

G =20% **A >15%** **R < 15%**

Year	PCC Result	SN Result	ENG Result
2012-13	13.0%	19.0%	14.0%
2013-14	18.0%	22.4%	17.0%
2014-15	19.0%	24.0%	17.0%

98



Month	Avg days
Jul-14	
Aug-14	
Sep-14	
Oct-14	
Nov-14	
Dec-14	
Jan-15	
Feb-15	
Mar-15	
Apr-15	258
May-15	370
Jun-15	354
Jul-15	359
Aug-15	359
Sep-15	354
Oct-15	335
Nov-15	385
Dec-15	381
Jan-16	381
Feb-16	379
Mar-16	372
Apr-16	372
May-16	371
Jun-16	381

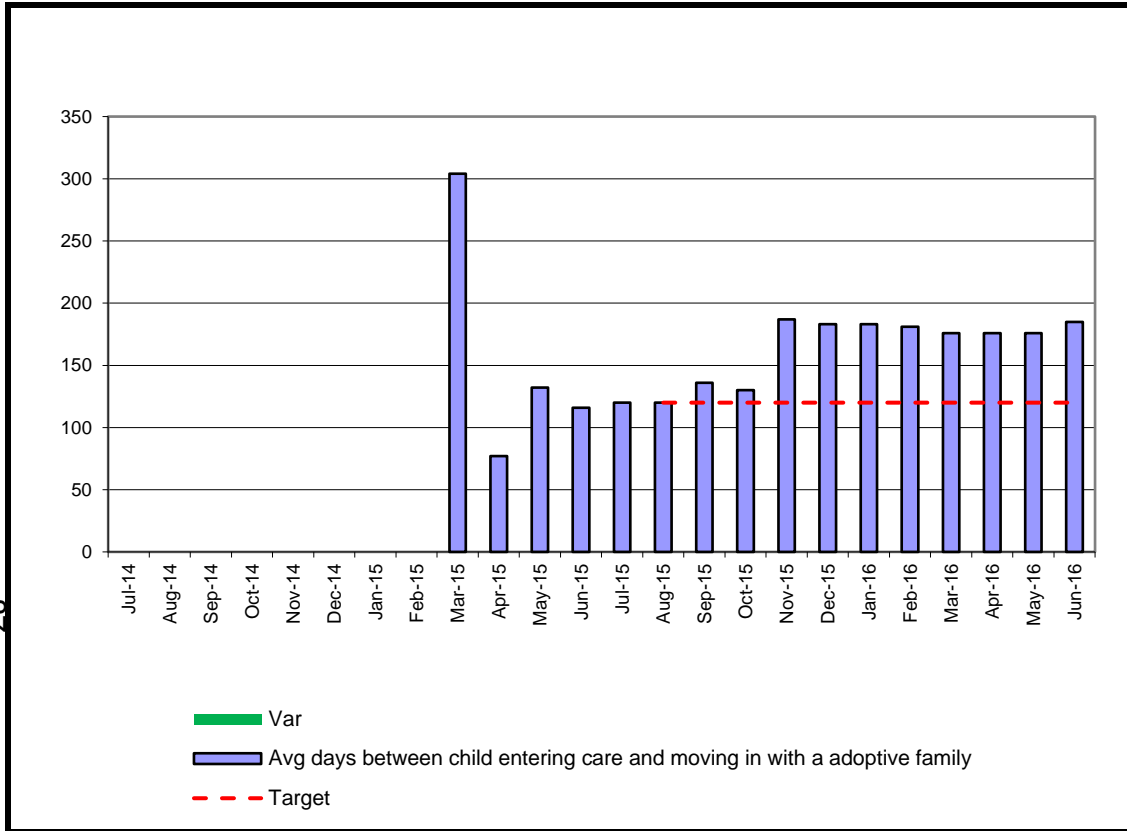
Target	Var	RAG
0	0	
0	0	
0	0	
0	0	
0	0	
0	0	
0	0	
0	0	
0	0	
0	0	
0	0	
0	0	
0	0	
0	0	
0	0	
0	0	
0	0	
0	0	
0	0	
0	0	
0	0	
0	0	
0	0	
0	0	
0	0	
0	0	
0	0	
487.0	-133	G
487.0	-152	G
487.0	-102	G
487.0	-106	G
487.0	-106	G
487.0	-108	G
487.0	-115	G
487.0	-115	G
487.0	-116	G
487.0	-106	G

CSC Commentary
 This indicator evidences good and sustained performance.

Definition:
 The average days between child entering care and moving in with a adoptive family and the average days between court agreeing adoption and LA approving a match. The monthly figures represent the cumulative total for the year to date.

G ≤487 **A** > **R**

Year	ER Result	ENG Result
2012-13		
2013-14		
2014-15	492.5	



Month	Avg days
Jul-14	
Aug-14	
Sep-14	
Oct-14	
Nov-14	
Dec-14	
Jan-15	
Feb-15	
Mar-15	304
Apr-15	77
May-15	132
Jun-15	116
Jul-15	120
Aug-15	120
Sep-15	136
Oct-15	130
Nov-15	187
Dec-15	183
Jan-16	183
Feb-16	181
Mar-16	176
Apr-16	176
May-16	176
Jun-16	185

Month	Target	Var	RAG
Jul-14		0.0	
Aug-14		0.0	
Sep-14		0.0	
Oct-14		0.0	
Nov-14		0.0	
Dec-14		0.0	
Jan-15		0.0	
Feb-15		0.0	
Mar-15		304.0	
Apr-15		77.0	
May-15		132.0	
Jun-15		116.0	
Jul-15		120.0	
Aug-15	120.0	0.0	R
Sep-15	120.0	16.0	G
Oct-15	120.0	10.0	A
Nov-15	120.0	67.0	G
Dec-15	120.0	63.0	G
Jan-16	120.0	63.0	G
Feb-16	120.0	61.0	A
Mar-16	120.0	56.0	A
Apr-16	120.0	56.0	R
May-16	120.0	56.0	R
Jun-16	120.0	65.0	R

CSC Commentary

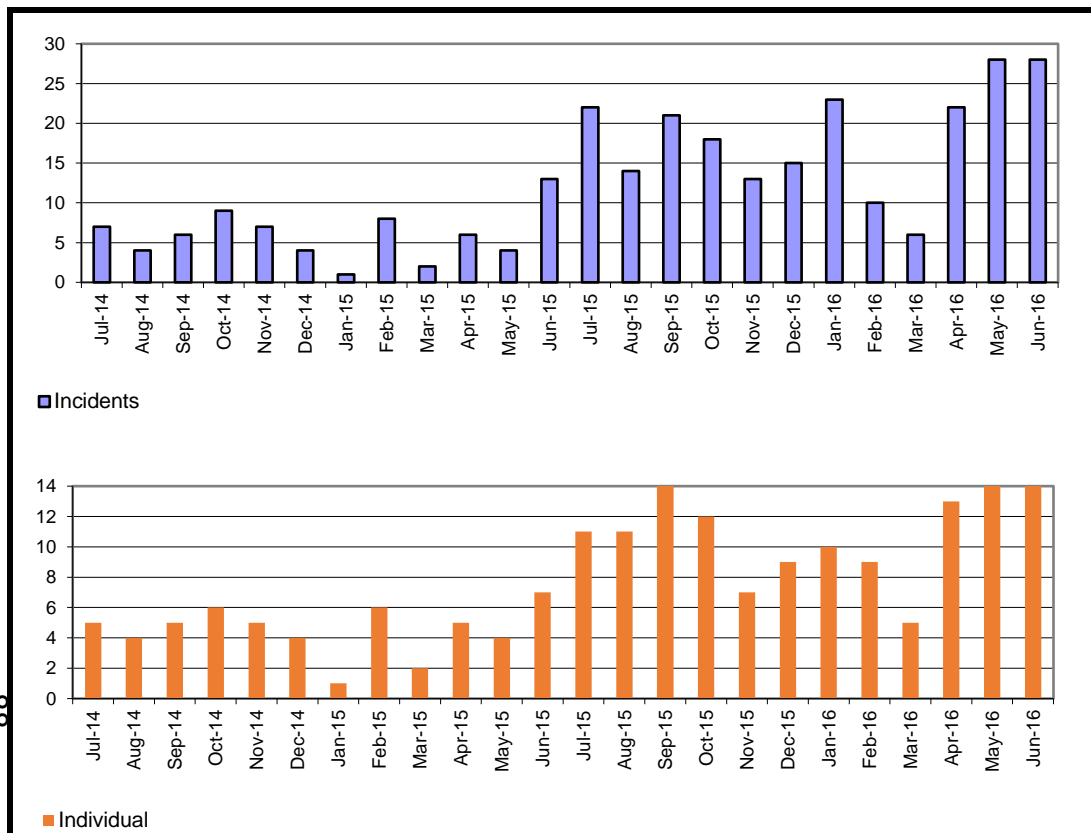
This indicator appears not to have been met however it is a more complex picture. As it measures the period from placement order to match it does not take account of children who have been placed with their adopters under fostering for adoption arrangements. 11 children who were adopted in the period had been previously fostered by their adopters. There remain some children however, who have waited a considerable time to move in with their adoptive family. Typically these children have been harder to place as they have additional needs or are part of a sibling group. Closer scrutiny of this indicator demonstrates good performance in comparison with strong performance last year. 236 days was the average between a child entering care and moving in with their adoptive family for 2014/15. 2015/16 performance is 178.

Definition

The average days between child entering care and moving in with a adoptive family and the average days between court agreeing adoption and LA approving a match. The monthly figures represent the cumulative total for the

G ≤120	A >	R <
---------------	---------------	---------------

Year	PCC Result	ER Result	ENG Result
2012-13			
2013-14			
2014-15	304.0	220.0	



Month	Incidents	Individual
Jul-14	7	5
Aug-14	4	4
Sep-14	6	5
Oct-14	9	6
Nov-14	7	5
Dec-14	4	4
Jan-15	1	1
Feb-15	8	6
Mar-15	2	2
Apr-15	6	5
May-15	4	4
Jun-15	13	7
Jul-15	22	11
Aug-15	14	11
Sep-15	21	16
Oct-15	18	12
Nov-15	13	7
Dec-15	15	9
Jan-16	23	10
Feb-16	10	9
Mar-16	6	5
Apr-16	22	13
May-16	28	16
Jun-16	28	14

CSC Commentary

This indicator has remained stable for the second month despite the increased challenge of preventing young people from going missing over the summer months. This has contributed to the relatively high figure however, as this in part is due to the longer daylight hours being a greater attraction for young people to go out without approval. The number of young people going missing has decreased but they account for the same number of incidents.

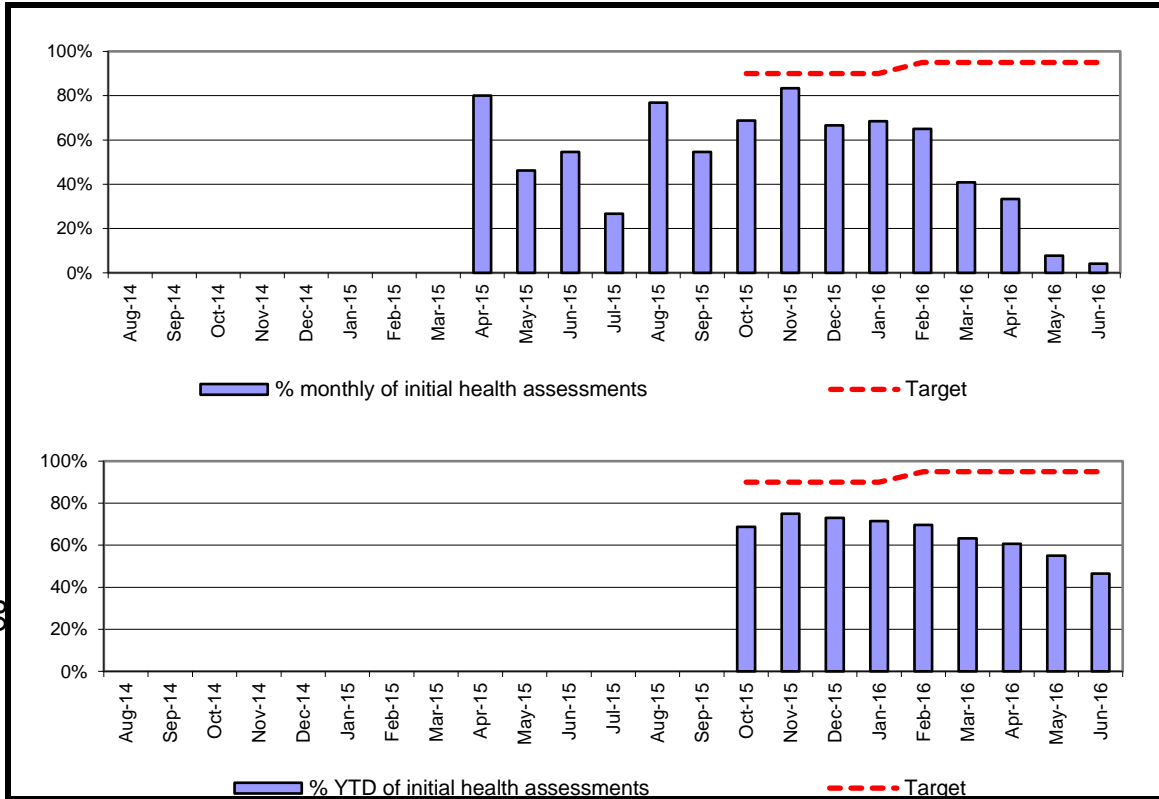
Definition

All missing incidents (including incidents occurring to CiC placed outside of Peterborough) for Children in Care recorded in the month; individuals is the number of children this involves (as some children may go missing more than once).



Initial health assessments completed within 20 working days of child entering care

68



Month	Init.HA	CiC St	% monthly	% YTD of initial	Target
Aug-14					
Sep-14					
Oct-14					
Nov-14					
Dec-14					
Jan-15					
Feb-15					
Mar-15					
Apr-15	8	10	80.0%	0.0%	
May-15	6	13	46.2%	0.0%	
Jun-15	12	22	54.5%	0.0%	
Jul-15	4	15	26.7%	0.0%	
Aug-15	10	13	76.9%	0.0%	
Sep-15	6	11	54.5%	0.0%	
Oct-15	11	16	68.8%	68.8%	90.0%
Nov-15	10	12	83.3%	75.0%	90.0%
Dec-15	6	9	66.7%	73.0%	90.0%
Jan-16	13	19	68.4%	71.4%	90.0%
Feb-16	13	20	65.0%	69.7%	95.0%
Mar-16	9	22	40.9%	63.3%	95.0%
Apr-16	3	9	33.3%	60.7%	95.0%
May-16	1	13	7.7%	55.0%	95.0%
Jun-16	1	24	4.2%	46.5%	95.0%

YTD:	87	183	--	47.5%	95.0%
-------------	-----------	------------	-----------	--------------	--------------

CSC Commentary

The last 6 months data for completion of Initial Health Assessments has been much improved compared with performance for the preceding 12 months. Over the last 6 months the percentage of IHAs completed within timescale is above 65%. Performance in April dipped to just 33% of IHAs were completed in timescale. This performance has been scrutinised and was affected by late referrals for 5 children, these children have now all received a health assessment. Improved processes were put in place to ensure a better percentage of IHAs were completed within timescale. Confirmed data by health is not yet finalised.

Definition

The number of children becoming looked after that have an initial health assessment recorded within 20 working days care. The number of children is measured one month in arrears to enable time for the 20 day period to elapse and exclude episode of care was closed within 20 days and also children entering care because they have been placed on remand (institution is responsible for completing the initial health assessment).

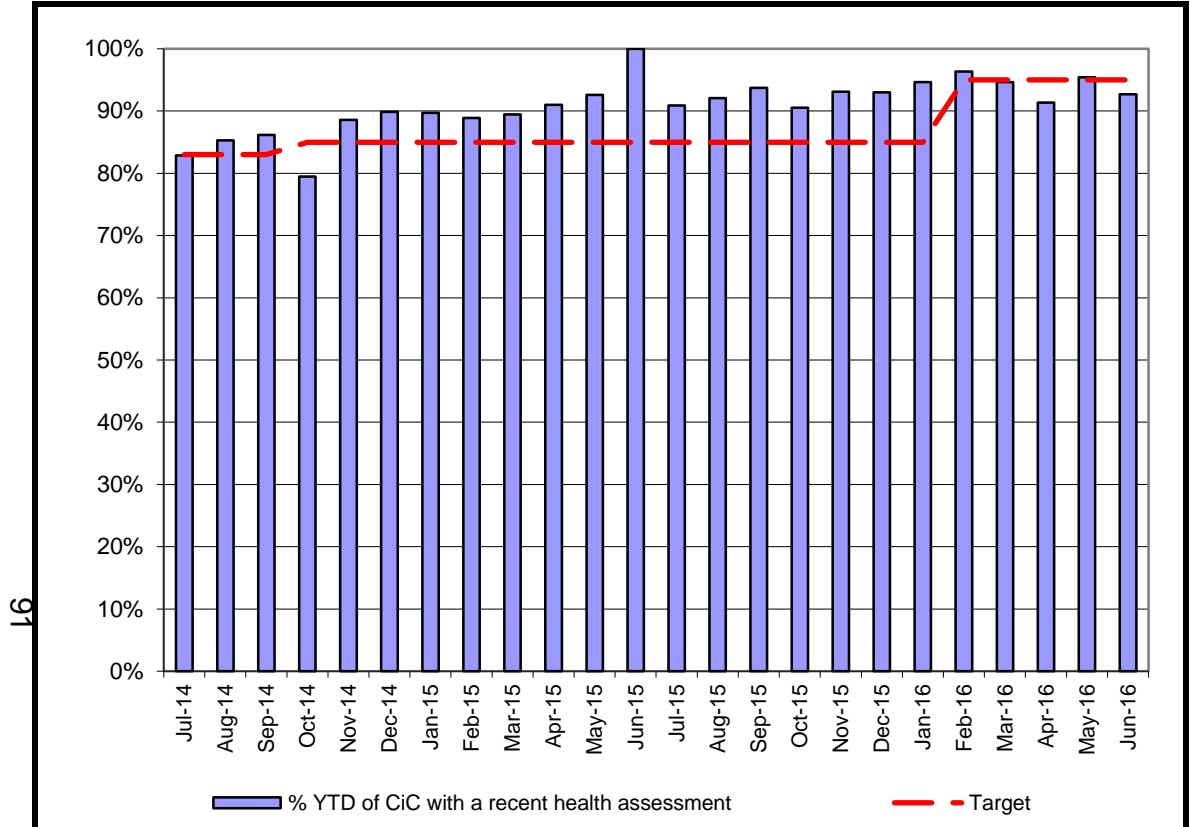


Var	RAG
-21.3	R
-15.0	R
-17.0	R
-18.6	R
-25.3	R
-31.7	R
06 -34.3	R
-40.0	R
-48.5	R

-47.5	R
-------	---

of the child entering
 ludes cases where the
 because the remand

85%



Month	Num.	Denom.	% YTD	Target	Variance	RAG
Jul-14	218	263	82.9%	83.0%	-0.1	G
Aug-14	226	265	85.3%	83.0%	2.3	G
Sep-14	230	267	86.1%	83.0%	3.1	G
Oct-14	205	258	79.5%	85.0%	-5.5	G
Nov-14	232	262	88.5%	85.0%	3.5	G
Dec-14	239	266	89.8%	85.0%	4.8	A
Jan-15	227	253	89.7%	85.0%	4.7	A
Feb-15	224	252	88.9%	85.0%	3.9	G
Mar-15	229	256	89.5%	85.0%	4.5	G
Apr-15	232	255	91.0%	85.0%	6.0	A
May-15	237	256	92.6%	85.0%	7.6	G
Jun-15	253	253	100.0%	85.0%	15.0	A
Jul-15	219	241	90.9%	85.0%	5.9	A
Aug-15	221	240	92.1%	85.0%	7.1	G
Sep-15	224	239	93.7%	85.0%	8.7	A
Oct-15	210	232	90.5%	85.0%	5.5	A
Nov-15	216	232	93.1%	85.0%	8.1	A
Dec-15	212	228	93.0%	85.0%	8.0	A
Jan-16	211	223	94.6%	85.0%	9.6	A
Feb-16	210	218	96.3%	95.0%	1.3	A
Mar-16	212	224	94.6%	95.0%	-0.4	A
Apr-16	211	231	91.3%	95.0%	-3.7	G
May-16	230	241	95.4%	95.0%	0.4	A
Jun-16	215	232	92.7%	95.0%	-2.3	A

CSC Commentary

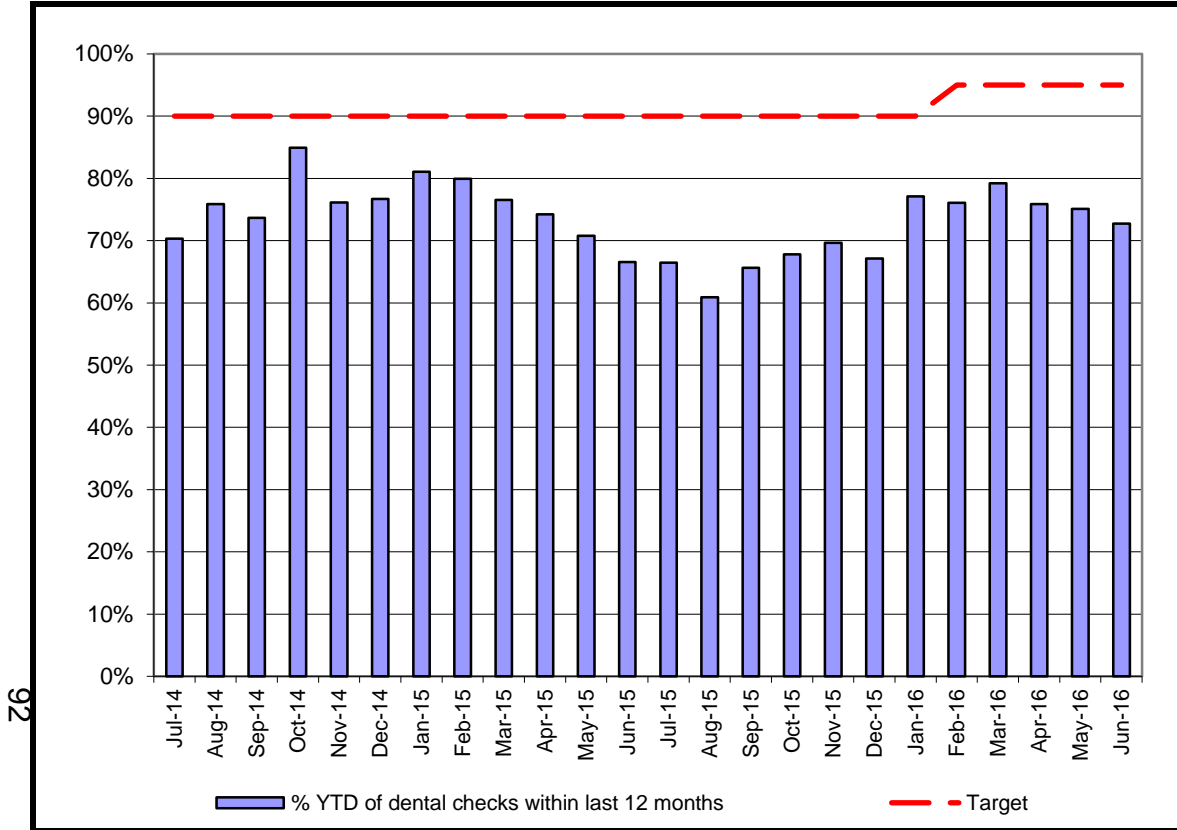
Performance has slipped this month by 2.7% to below the target rate of 95%. There are a number of young people, particularly older teenagers, who continue to refuse assessments. Workers will continue to make concerted efforts to engage these young people.

Definition

Of the children who had been in care for at least 12 months the proportion who had an annual health assessment during the previous 12 months.

G >= 95%	A > 85%	R < 85%
----------	---------	---------

Year	PCC Result	SN Result	ENG Result
2012-13	85.4%	85.0%	87.3%
2013-14	93.9%	89.1%	88.4%
2014 -15			



Month	Num.	Denom.	% YTD	Target	Variance	RAG
Jul-14	225	320	70.3%	90.0%	-19.7	R
Aug-14	239	315	75.9%	90.0%	-14.1	R
Sep-14	232	315	73.7%	90.0%	-16.3	A
Oct-14	265	312	84.9%	90.0%	-5.1	R
Nov-14	236	310	76.1%	90.0%	-13.9	R
Dec-14	237	309	76.7%	90.0%	-13.3	R
Jan-15	240	296	81.1%	90.0%	-8.9	R
Feb-15	231	289	79.9%	90.0%	-10.1	R
Mar-15	225	294	76.5%	90.0%	-13.5	R
Apr-15	213	287	74.2%	90.0%	-15.8	A
May-15	206	291	70.8%	90.0%	-19.2	R
Jun-15	195	293	66.6%	90.0%	-23.4	R
Jul-15	194	292	66.4%	90.0%	-23.6	A
Aug-15	176	289	60.9%	90.0%	-29.1	R
Sep-15	191	291	65.6%	90.0%	-24.4	R
Oct-15	196	289	67.8%	90.0%	-22.2	R
Nov-15	204	293	69.6%	90.0%	-20.4	R
Dec-15	198	295	67.1%	90.0%	-22.9	R
Jan-16	222	288	77.1%	90.0%	-12.9	R
Feb-16	229	301	76.1%	95.0%	-18.9	R
Mar-16	244	308	79.2%	95.0%	-15.8	R
Apr-16	239	315	75.9%	95.0%	-19.1	R
May-16	235	313	75.1%	95.0%	-19.9	R
Jun-16	235	323	72.8%	95.0%	-22.2	R

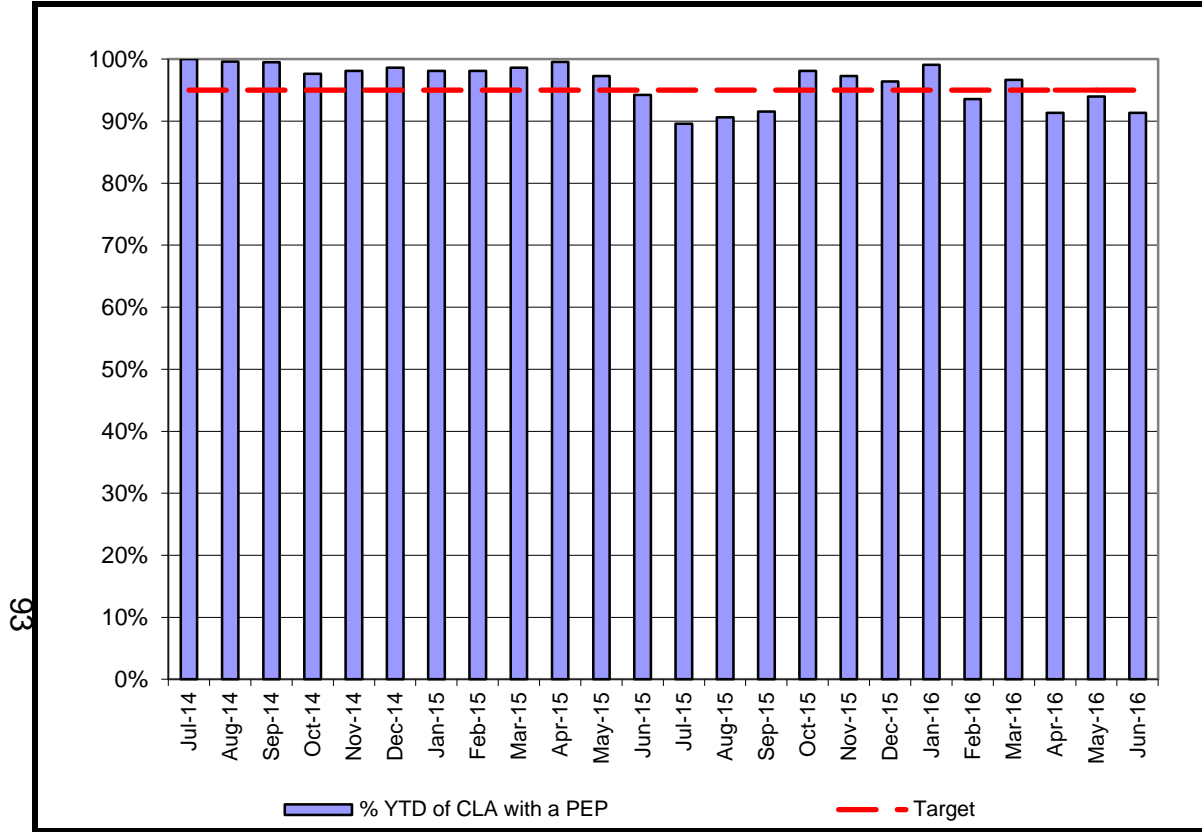
CSC Commentary

This indicator has decreased slightly to 72.8%. Although the number of children having dental checks hasn't actually decreased, the number of children in care at the month end (denominator) has increased impacting negatively on this figure. In part, low performance is due to a number of teenage children who consistently refuse dental check and also a number of unaccompanied minors who have been registered with dentists but who have significant waiting time delays before they can be seen for check-ups. The teams will continue to focus on those young people who's dental checks are at 11 months to try and avoid the figures dropping further.

Definition

The percentage of children looked after who have had a dental check within the previous 12 months. Children looked after aged between 3 and 17 years old that have a dental check recorded on Liquidlogic that was completed within the previous 12 months. The denominator is the number of children looked after (3 - 17) at the month end.

G >= 95%	A > 90%	R < 90%
--------------------	-------------------	-------------------



Month	Num.	Denom.	% YTD
Jul-14	240	240	100.0%
Aug-14	237	238	99.6%
Sep-14	203	204	99.5%
Oct-14	207	212	97.6%
Nov-14	209	213	98.1%
Dec-14	211	214	98.6%
Jan-15	209	213	98.1%
Feb-15	209	213	98.1%
Mar-15	213	216	98.6%
Apr-15	213	214	99.5%
May-15	214	220	97.3%
Jun-15	212	225	94.2%
Jul-15	206	230	89.6%
Aug-15	193	213	90.6%
Sep-15	195	213	91.5%
Oct-15	206	210	98.1%
Nov-15	215	221	97.3%
Dec-15	214	222	96.4%
Jan-16	216	218	99.1%
Feb-16	217	232	93.5%
Mar-16	232	240	96.7%
Apr-16	222	243	91.4%
May-16	233	248	94.0%
Jun-16	232	254	91.3%

Target	Variance	RAG
95.0%	5.0	G
95.0%	4.6	G
95.0%	4.5	G
95.0%	2.6	G
95.0%	3.1	G
95.0%	3.6	G
95.0%	3.1	G
95.0%	3.1	G
95.0%	3.6	G
95.0%	4.5	G
95.0%	2.3	G
95.0%	-0.8	G
95.0%	-5.4	G
95.0%	-4.4	A
95.0%	-3.5	R
95.0%	3.1	A
95.0%	2.3	A
95.0%	1.4	G
95.0%	4.1	G
95.0%	-1.5	G
95.0%	1.7	G
95.0%	-3.6	A
95.0%	-1.0	G
95.0%	-3.7	A

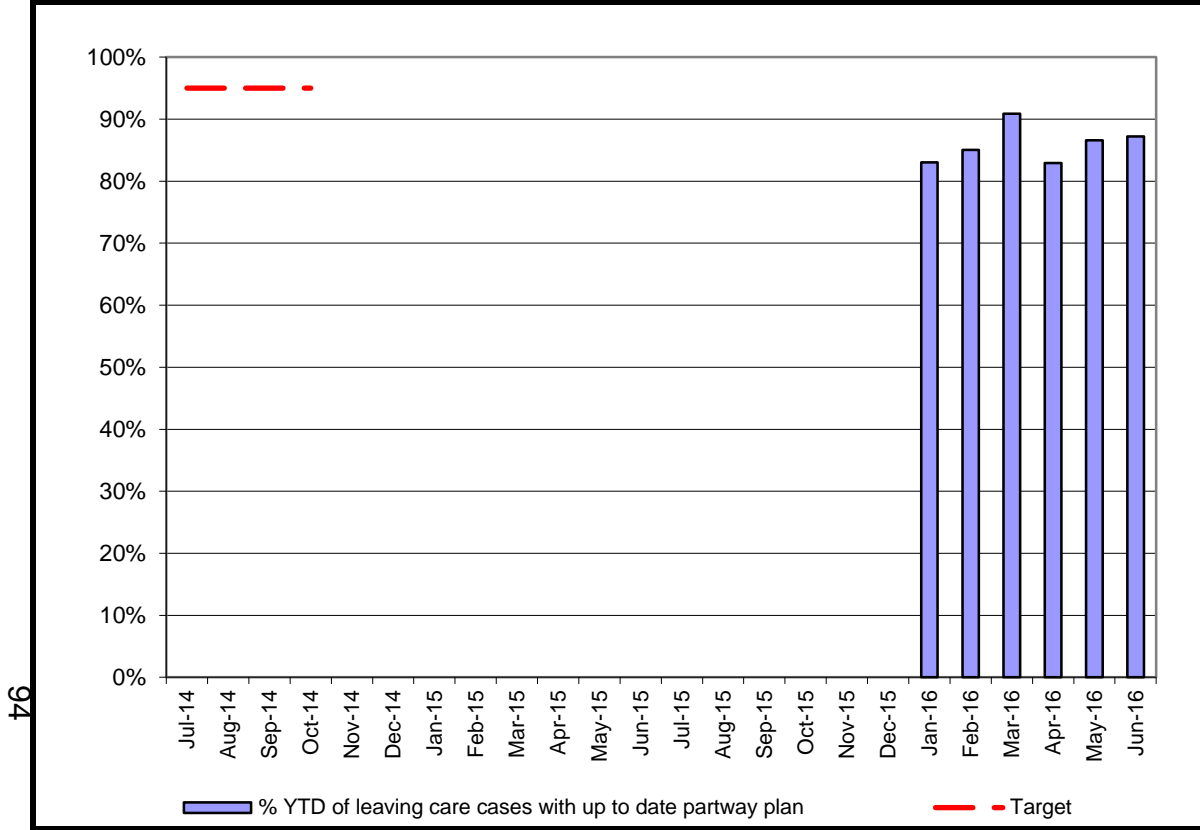
CSC Commentary

Social Workers have been reminded to record PEP meetings on LL. We will cross reference with a list from the PMT and advise managers of those SWs who are non compliant in terms of LL recording of meetings

Definition

The denominator is the number of children in care who are of school age. The numerator is of those children, the number that have a PEP added to the system.

G = 95% **A=95%-90%** **R < 90%**



Month	Num.	Denom.	% YTD	Target	Variance	RAG
Jul-14				95.0%	-95.0	R
Aug-14				95.0%	-95.0	R
Sep-14				95.0%	-95.0	R
Oct-14				95.0%	-95.0	R
Nov-14						
Dec-14						
Jan-15						
Feb-15						
Mar-15						
Apr-15						
May-15						
Jun-15						
Jul-15						
Aug-15						
Sep-15						
Oct-15						
Nov-15						
Dec-15						
Jan-16	147	177	83.1%			
Feb-16	148	174	85.1%			
Mar-16	159	175	90.9%			
Apr-16	175	211	82.9%			
May-16	187	216	86.6%			
Jun-16	184	211	87.2%			

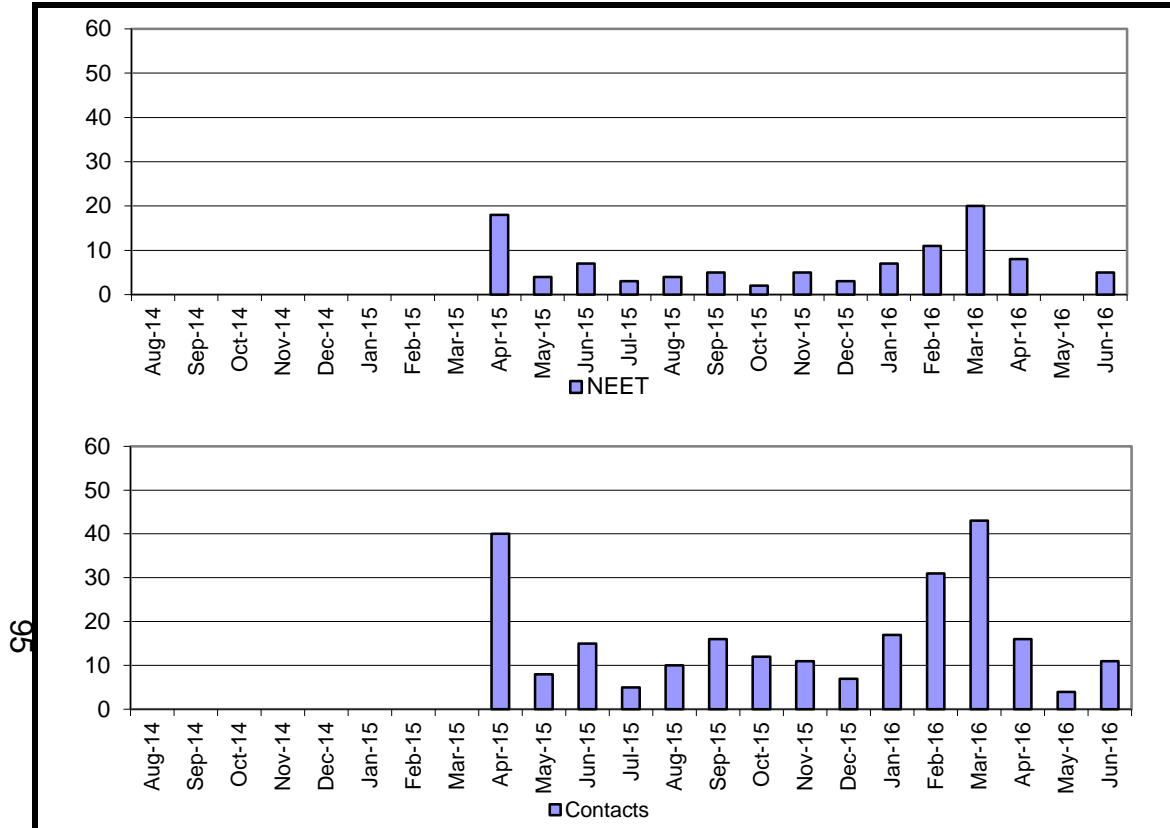
CSC Commentary

This indicator has increased slightly to 87.2% and continues the upward trajectory since April. The CiC Service recently undertook a Practice Workshops highlighting the quality and role of pathway planning for young people and this seems to be yielding positive results.

Definition

The percentage of leaving care cases with a pathway plan that has been updated within the last 6 months. The numerator is the number of children looked after cases assigned to the leaving care service that have a pathway plan which has been updated and recorded on Liquidlogic within the previous 6 months. The denominator is the number of children looked after assigned to the leaving care service as at the month end.

G =TBC **A =TBC** **R=TBC**



Month	NEET	Contacts	%	Target	Variance	RAG
Jul-14						
Aug-14						
Sep-14						
Oct-14						
Nov-14						
Dec-14						
Jan-15						
Feb-15						
Mar-15						
Apr-15	18	40	45.0%			
May-15	4	8	50.0%			
Jun-15	7	15	46.7%			
Jul-15	3	5	60.0%			
Aug-15	4	10	40.0%			
Sep-15	5	16	31.3%			
Oct-15	2	12	16.7%			
Nov-15	5	11	45.5%			
Dec-15	3	7	42.9%			
Jan-16	7	17	41.2%			
Feb-16	11	31	35.5%			
Mar-16	20	43	46.5%			
Apr-16	8	16	50.0%			
May-16	0	4	0.0%			
Jun-16	5	11	45.5%			

YTD	73	183	39.9%			
------------	-----------	------------	--------------	--	--	--

CSC Commentary

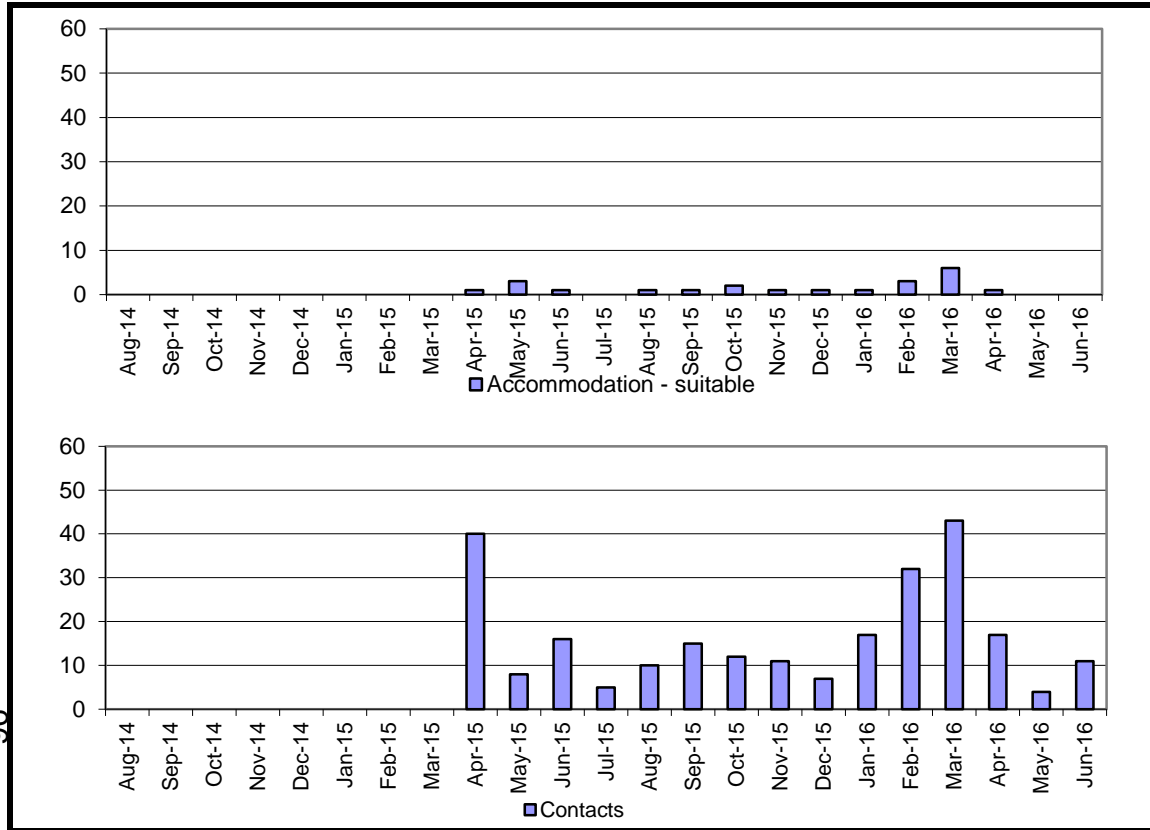
The data team only report contacts with former relevant care leavers from those new entries on the DFE 'birthday' return and only report new information from this month. Changing this indicator so that it reports more meaningful information will be discussed with the Data Management Team. For this month however, of the 11 young people having a contact recorded, 5 of them were NEET, which gives a percentage of 45% who were not in education/training or employment.

Definition
 All contacts with former relevant care leavers aged 19, 20 or 21 recorded on the case management system within the month and the proportion of those who declared themselves to be Not in Education Employment or Training

G =TBC **A =TBC** **R=TBC**

Year	ER Result	SN Res	ENG Result
2012-13		-	-
2013-14		-	-
2014-15		-	-

96



Month	Accomm	Contacts	%
Jul-14			
Aug-14			
Sep-14			
Oct-14			
Nov-14			
Dec-14			
Jan-15			
Feb-15			
Mar-15			
Apr-15	1	40	2.5%
May-15	3	8	37.5%
Jun-15	1	16	6.3%
Jul-15	0	5	0.0%
Aug-15	1	10	10.0%
Sep-15	1	15	6.7%
Oct-15	2	12	16.7%
Nov-15	1	11	9.1%
Dec-15	1	7	14.3%
Jan-16	1	17	5.9%
Feb-16	3	32	9.4%
Mar-16	6	43	14.0%
Apr-16	1	17	5.9%
May-16	0	4	0.0%
Jun-16	0	11	0.0%

Target	Variance	RAG

YTD	17	184	9.2%
------------	-----------	------------	-------------

Definition
All contacts with former relevant care leavers aged 19, 20 or 21 recorded on the case management system within the month and the proportion of those who declared themselves to be Not in Suitable Accommodation

G =TBC	A =TBC	R=TBC
--------	--------	-------

CSC Commentary
The data team only report contacts with former relevant care leavers from those new entries on the DFE 'birthday' return and only report new information from this month. Changing this indicator so that it reports more meaningful information will be discussed with the Data Management Team. For this month however, of the 11 young people having a contact recorded, all of them stated that they resided in suitable accommodation.

Year	ER Result	SN Res	ENG Result
2012-13		-	-
2013-14		-	-
2014-15		-	-

Jun-15	Sep-15	Dec-15	Mar-16	Jun-16
--------	--------	--------	--------	--------

Children looked after	345	340	349	359	371
-----------------------	-----	-----	-----	-----	-----

Age

Under 1	23	17	20	22	22
1 to 4	39	37	39	36	36
5 to 9	64	68	70	74	81
10 to 15	147	145	144	149	149
16-17	69	72	76	78	82
18 or over	2	1	0	0	1

Gender

Male	189	197	199	203	211
Female	151	152	156	156	160

Legal Status

Interim care orders	26	39	49	56	60
Full care orders	160	157	162	167	163
Voluntary agreements	95	88	89	97	107
Freed adoption / placement order	63	53	47	37	37
Others	1	3	2	2	4

Placement

Foster carers - In House	152	143	154	168	173
Foster carers - Agency	106	102	101	106	108
Foster carers - Unknown	0	0	0	0	0
Fostering by relatives or friends	13	26	32	24	19
With parents	11	9	5	6	4
Independent living	26	24	23	25	31
Residential care homes	23	23	23	22	30
Other residential schools	3	3	4	5	2
Placed for adoption	10	9	5	2	3
Secure unit	1	1	1	1	0
Other	0	0	1	0	1

Jun-15	Sep-15	Dec-15	Mar-16	Jun-16
--------	--------	--------	--------	--------

Children looked after	345	340	349	359	371
-----------------------	-----	-----	-----	-----	-----

Ethnicity

White British	237	227	235	237	235
White Irish	0	0	0	0	0
White Other	40	37	38	44	47
White	277	264	273	281	282
Mixed White & Black Caribbean	7	6	7	3	4
Mixed White & Black African	2	2	2	5	6
Mixed White & Asian	11	12	11	13	14
Any other mixed background	9	12	11	10	11
Mixed	29	32	31	31	35
Indian	0	0	0	0	0
Pakistani	5	5	5	6	5
Bangladeshi	0	0	0	0	0
Any other Asian background	9	9	10	11	18
Asian	14	14	15	17	23
Caribbean	2	2	2	2	2
African	14	12	12	10	12
Any other Black background	4	6	6	6	7
Black	20	20	20	18	21
Chinese	0	0	0	0	0
Any other ethnic group	5	10	10	11	10
Other	5	10	10	11	10
Not stated / not yet obtained	0	0	0	1	0

Length of time in care

0 - 6 months	62	86	92	92	102
7 - 12 months	34	21	29	55	51
1 - 2 years	97	73	70	56	60
3 - 5 years	56	66	62	67	72
6 - 10 years	83	78	79	71	72
11 -15 years	12	15	16	16	14
16+ years	1	1	1	2	0

This page is intentionally left blank